



PLATINUM PRO
Construction

FOR SALE

Lot 6
Jerney Way



HOUSE & LAND

The William 247 boasts the ultimate family layout. This thoughtfully laid out home offers enough space for everyone to enjoy with a large open kitchen featuring a walk in pantry and living space that flows out onto a spacious alfresco area perfect for entertaining the extended family and friends. The main bedroom has a large his and hers walk in robe and ensuite, and the downstairs rumpus is a great space that could be set up as a theatre or home office.

\$ 965,000*



3 Bedrooms



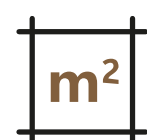
2 Car Garage



2.5 Bathrooms



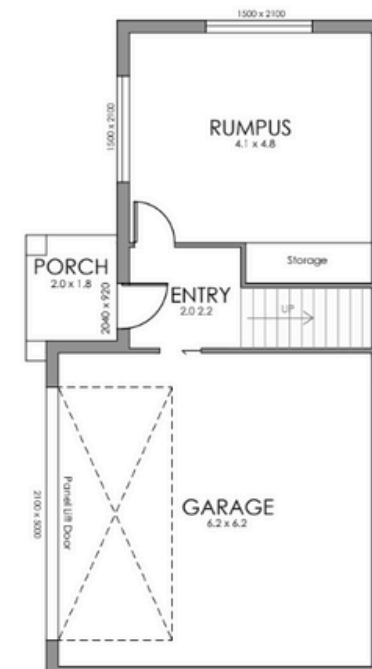
House Size - 247m²



Land Size - 1002m²

Package Inclusions

- ✓ Colorbond Roof
- ✓ Daikin 9kw Heat Pump
- ✓ Double Glazed Windows
- ✓ 50m² external concrete
- ✓ Custom Built Vanities
- ✓ Floor Coverings
- ✓ Window Furnishings
- ✓ B & D Motorised Panel Lift Garage Door
- ✓ Mebau Deck



FLOOR PLAN

Call today and secure your dream home

*Disclaimer: The above information has been gathered from sources that we believe are reliable. However, we cannot guarantee the accuracy of this information and nor do we accept responsibility for its accuracy. Any interested parties should rely on their own enquiries and judgment to determine the accuracy of this information for their own purposes. Images are for illustrative and design purposes only and may not represent the final product or finishes. For inclusions refer to the inclusions in the contract of sale and building contract.



Contact us

Paul James

0418 656 366

info@756group.com.au

756group Pty Ltd

